



REPUBLIC OF THE GAMBIA

THE GAMBIA CONSUMER PRICE INDEX (CPI) JANUARY 2016



CAUTION

The Gambia Bureau of Statistics is very pleased to deliver to users the new Consumer Price Index (CPI) based in 2004 that replace the previous one which was based in 1974. The CPI is published every month by the 15th.

								Changes in % over	
	ALL ITEMS(NEW SERIES; 2004=100)	Weights	Jan-15	Oct-15	Nov-15	Dec-15	Jan-16	1 month	Over 12 Months
	OVERALL INDEX	61841	161.60	169.78	171.10	171.82	172.41	0.34	6.68
01	Food and non-alcoholic beverages	33837	180.01	190.47	191.82	192.81	193.70	0.46	7.61
011	Food	32 914	181.44	192.13	193.53	194.55	195.45	0.46	7.72
0111	Bread & Cereals	7 891	175.39	186.63	187.71	189.25	189.51	0.14	8.05
0112	Meat	8 217	186.51	205.12	207.95	209.42	211.00	0.75	13.13
0113	Fish	2 226	146.49	156.75	157.46	159.55	161.02	0.92	9.92
0114	Milk, Cheese and Eggs	1 462	144.26	148.43	148.68	148.84	149.97	0.76	3.95
0115	Oils and fats	3 469	213.44	222.90	225.04	225.47	227.56	0.93	6.62
0116	Fruits & nuts	1445	178.59	184.84	185.47	185.54	185.79	0.13	4.03
0117	Vegetables, root crops & tubers	4 533	190.46	194.26	194.61	194.91	195.07	0.08	2.42
0118	Sugar, jam, honey & sweets	1 420	229.74	236.95	237.87	238.39	238.65	0.11	3.88
0119	Other food products	2 248	147.41	152.69	153.03	153.35	153.77	0.27	4.31
012	Non-alcoholic beverages	923	128.65	130.67	130.61	130.73	131.16	0.32	1.95
02	Alcoholic beverages, Tobacco and Narcotics	416	115.45	117.57	117.85	118.34	118.88	0.46	2.97
03	Clothing, textiles and footwear	6 911	127.64	133.99	135.71	136.29	136.39	0.07	6.85
031	Clothing, Garments and Tailoring services	5 434	125.75	132.16	134.34	134.80	134.88	0.06	7.26
032	Footwear	1 477	134.61	140.72	140.76	141.76	141.94	0.13	5.44
04	Housing, water, electricity, gas and other fuels	2 089	169.60	175.72	175.94	176.18	176.76	0.33	4.22
042	Actual rent	498	128.77	131.12	131.71	132.10	132.59	0.37	2.97
043	Electricity, gas and other fuels	1 431	185.45	193.45	193.54	193.75	194.43	0.35	4.85
05	Furnishings, household equipment and routine household maintenance	3 215	128.42	132.28	134.13	134.42	134.81	0.30	4.98
06	Health	728	130.72	132.78	133.11	134.02	134.05	0.03	2.55
07	Transport	2 706	225.42	228.20	228.57	228.69	229.05	0.16	1.61
08	Communication	1 822	103.97	104.49	104.48	104.48	104.50	0.01	0.50
09	Recreation and culture	957	117.58	119.90	120.04	120.04	120.59	0.46	2.57
10	Education	918	108.42	108.98	109.15	109.19	109.23	0.03	0.75
11	Restaurants and Hotels	222	165.63	174.03	175.31	175.98	177.09	0.63	6.92
12	Miscellaneous goods and services	3 639	170.66	182.23	184.21	184.94	185.12	0.10	8.47
	12 MONTH MOVING AVERAGE		156.59	164.53	165.41	166.31	167.21	0.54	6.78
	OVERALL INDEX		161.60	169.78	171.10	171.82	172.41	0.34	6.68
	FOOD AND NON-ALCOHOLIC BEVERAGES		180.01	190.47	191.82	192.81	193.70	0.46	7.61
	NON-FOOD PRODUCTS AND SERVICES		137.87	143.10	144.38	144.73	144.94	0.14	5.13

The January 2016 inflation rate measured on year on year basis, that is between January 2015 and January 2016 went up by 6.68 percent. Some prices for both Food and Non-food items had gone up. Food and Non-Alcoholic Beverages increased by 7.61 whilst Non-Food products and Services rose by 5.13 percent.

From January 2015 to January 2016, within the Food and Non-Alcoholic Beverages, 'Meat and meat products' increased by 13.13 percent, 'Fish and Fish products' 9.92 percent, 'Bread and Cereals' 8.05 percent 7.72 percent, and 'Oils and Fats' 6.62 percent.

For the Non-Food items, the major increases were recorded by 'Clothing, Garments and Tailoring Services', 'Clothing Textile and Footwear' and Footwear which rose by 7.26 percent, 6.85 percent respectively.

During the month of December 2015 to January 2016, the 'Oils and Fats' show the highest increase of 0.93 percent, followed by 'Fish and Fish products' with 0.92 percent increase, 'whilst' Milk, Cheese and Eggs' increased by 0.76 percent.' 'Meat and Meat products' registered an increase of 0.75 percent as well.

Using the 12 months-moving-average measure, inflation shows a decrease, recording 6.78 percent during January 2016 compared to 6.81 percent which was recorded for December 2015.

Overall Annual Inflation Rate (over 12 months - Comparison with the same month for the previous year)

Year	Jan	Feb	March	April	May	Jun	July	Aug	Sept	Oct	Nov	Dec
2013	5.2	5.3	5.4	5.6	5.7	5.8	5.9	6.0	6.1	6.1	5.9	5.5
2014	5.4	5.6	5.6	5.7	5.6	5.4	5.6	5.7	6.3	6.6	6.8	6.9
2015	7.0	6.8	6.7	6.7	7.2	7.2	6.9	6.9	6.6	6.5	6.6	6.7
2016	6.7											

Figure1: Annual changes – Comparison with the same month of the previous year. (Jan 2015 –Jan 2016)

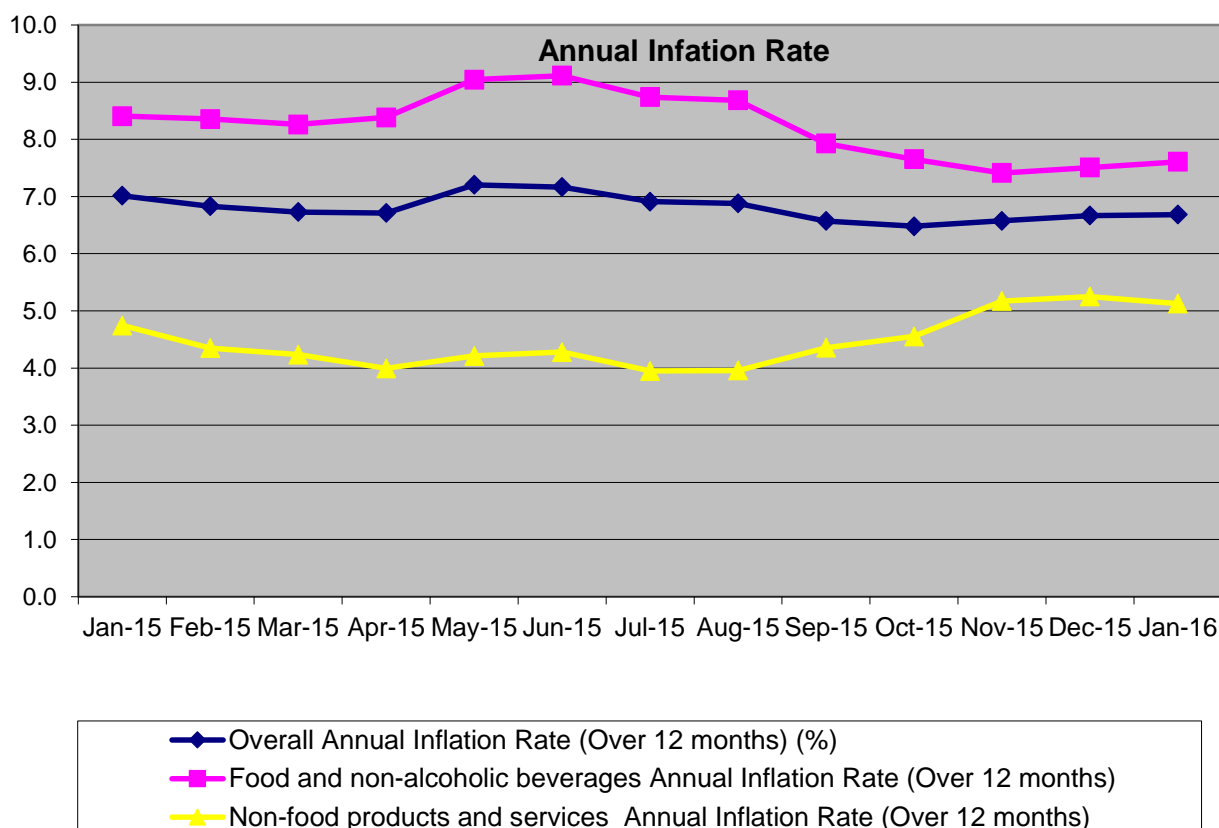
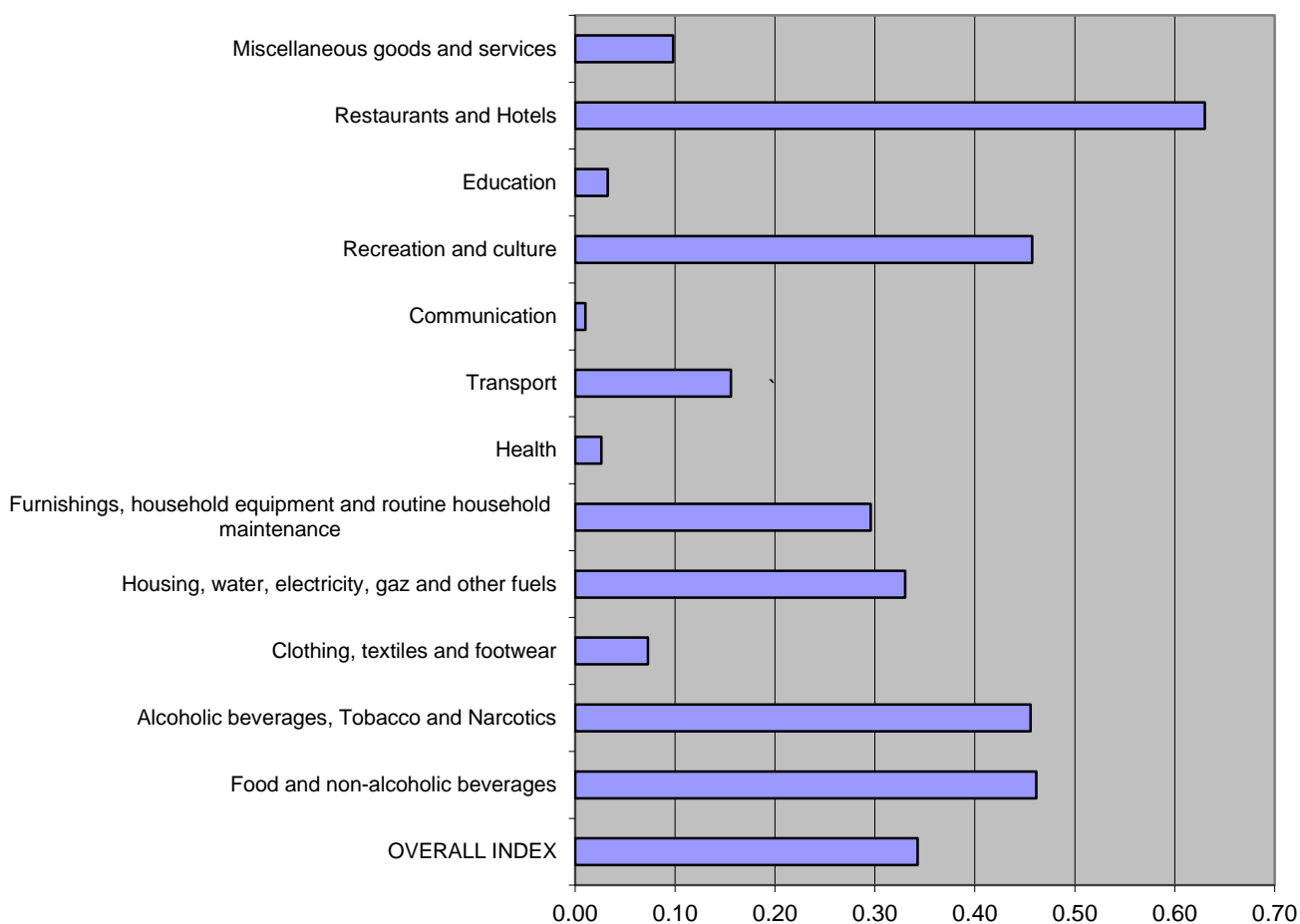


Figure 2: Monthly changes - Comparison with the previous month: December 2015 to January 2016

Price Changes in % over 1 month



CONTACTS

The Gambia Bureau of Statistics (GBOS)
 Kanifing Institutional Layout
 P.O.Box 3504 Serekunda
 Tel. (220) 4394529
 Fax. (220) 437 7848
 Web site: www.gbos.gov.gm
 Publication Director: Mr. Nyakasi Sanyang, Statistician- General
 Publication Editor: Mr Ousman Dibba, Director Economics Division GBOS
 email: odibba@gbos.gov.gm
 Statistician in charge of CPI: Fatou Darboe
 email: fdarboe@gbos.gov.gm