



REPUBLIC OF THE GAMBIA

## THE GAMBIA CONSUMER PRICE INDEX (CPI) APRIL 2013



### CAUTION

The Gambia Bureau of Statistics is very pleased to deliver to users the new Consumer Price Index (CPI) based in 2004 that replace the previous one which was based in 1974. The CPI is published every month by the 15<sup>th</sup>.

	ALL ITEMS(NEW SERIES; 2004=100)	Weights	Apr-12	Jan-12	Feb-13	Mar-12	Apr-13	Changes in % over	
								1 month	Over 12 Months
	<b>OVERALL INDEX</b>	61841	137.23	143.33	143.80	144.37	144.94	0.39	5.62
01	Food and non-alcoholic beverages	33837	148.51	156.19	156.85	157.56	158.21	0.41	6.53
011	Food	32 914	149.28	157.09	157.76	158.50	159.15	0.41	6.62
0111	Bread & Cereals	7 891	144.54	157.26	158.37	159.05	159.75	0.44	10.52
0112	Meat	8 217	135.95	142.43	142.90	143.74	144.24	0.35	6.10
0113	Fish	2 226	125.20	129.05	129.21	129.55	130.37	0.63	4.13
0114	Milk, Cheese and Eggs	1 462	124.55	128.71	128.96	129.07	129.52	0.35	3.98
0115	Oils and fats	3 469	177.24	186.88	187.41	189.03	190.27	0.66	7.35
0116	Fruits & nuts	1445	154.43	161.81	164.02	164.87	165.74	0.53	7.33
0117	Vegetables, root crops & tubers	4 533	170.71	176.50	176.76	177.29	177.52	0.13	3.99
0118	Sugar, jam, honey & sweets	1 420	205.03	213.25	214.40	214.67	215.62	0.44	5.17
0119	Other food products	2 248	130.11	133.37	133.81	134.38	135.06	0.51	3.81
012	Non-alcoholic beverages	923	120.99	123.68	123.99	124.07	124.31	0.20	2.75
02	Alcoholic beverages, Tobacco and Narcotics	416	122.44	111.44	111.55	111.66	111.90	0.21	2.49
03	Clothing, textiles and footwear	6 911	109.18	118.93	119.07	119.42	119.54	0.10	3.08
031	Clothing, Garments and Tailoring services	5 434	112.51	117.66	117.78	118.07	118.18	0.09	2.74
032	Footwear	1 477	108.62	123.59	123.82	124.38	124.53	0.12	4.30
04	Housing, water, electricity, gas and other fuels	2 089	115.96	152.30	153.47	154.37	155.27	0.58	15.91
042	Actual rent	498	115.03	124.73	124.73	124.81	125.22	0.33	2.17
043	Electricity, gas and other fuels	1 431	109.27	162.27	163.91	165.18	166.35	0.70	18.00
05	Furnishings, household equipment and routine household maintenance	3 215	109.24	122.81	122.98	123.33	123.67	0.28	2.64
06	Health	728	126.60	102.56	102.56	102.56	102.62	0.06	0.42
07	Transport	2 706	119.40	180.75	181.74	183.15	186.71	1.94	15.89
08	Communication	1 822	133.96	103.18	103.18	103.20	103.21	0.01	0.42
09	Recreation and culture	957	122.55	111.99	112.12	112.35	112.59	0.21	2.39
10	Education	918	106.83	107.14	107.14	107.14	107.14	0.00	0.69
11	Restaurants and Hotels	222	140.98	146.08	146.39	147.37	148.34	0.66	5.96
12	Miscellaneous goods and services	3 639	120.49	151.96	152.14	152.59	153.49	0.59	4.69
	<b>12 MONTH MOVING AVERAGE</b>		135.10	139.63	140.23	140.84	141.49	0.46	4.72
	<b>OVERALL INDEX</b>		137.23	143.33	143.80	144.37	144.94	0.39	5.62
	<b>FOOD AND NON-ALCOHOLIC BEVERAGES</b>		148.51	156.19	156.85	157.56	158.21	0.41	6.53
	<b>NON-FOOD PRODUCTS AND SERVICES</b>		122.44	126.75	126.97	127.37	127.83	0.36	4.40

The overall Consumer Price Index has further moved to 144.94 in April -2013 indicating an increase of 0.39 percent over the March 2013 figure of 144.37.

On an annual basis the overall index increased by 5.62 percent from April 2012 to April 2013 compared to the 5.35 percent increase for the March 2012 to March 2013. This increase was primarily due to the food and non- alcoholic beverages, which rose by 0.41 percent during April 2013 whilst Non Food Products and services increased by 0.36 percent.

From April 2012 to April 2013, within the Food and Non Alcoholic Beverages, '*Bread and Cereal*' increased by 10.52 percent, '*Meat and meat products*' 6.10 percent '*Oils and Fats*' 7.35 percent, '*Fruits and nuts*' 7.33 percent and '*Sugar, jam, honey & sweets*' 5.17 percent.

For the Non Food items, the major increases were recorded by '*electricity, gas and other fuel*' and '*Transport*' which rose by 18.00 percent and 15.89 percent respectively. There were also some increases in footwear, Restaurants and Hotels and well as the Miscellaneous items during the period.

During the months of March 2013 to April 2013, the '*Oil and Fats*' sub-group show the highest increase of 0.66 percent, followed by '*Fish and Fish Products*' with 0.63 percent increase, whilst the '*Bread and Cereal*' went up by 0.44 percent. '*Other food products*' sub-group also registered an increase of 0.51 percent as well.

Using the 12 months-moving-average measure, inflation shows a slight increase recording 4.4 percent during April 2013 compared to 4.2 which was recorded for March 2013.

Overall Annual Inflation Rate (over 12 months - Comparison with the same month for the previous year)

Year	Jan	Feb	March	April	May	Jun	July	Aug	Sept	Oct	Nov	Dec
2010	3.6	3.8	4.0	4.1	4.1	4.5	6.2	6.1	6.2	6.2	5.9	5.8
2011	5.0	5.4	5.4	5.5	5.5	5.4	3.9	4.3	4.1	4.3	4.3	4.4
2012	4.3	3.8	3.9	3.8	4.1	4.2	4.4	4.2	4.2	4.3	4.7	4.9
2013	5.2	5.3	5.4	5.6								

Figure1. Annual changes – Comparison with the same month of the previous year (Apr. 2012 to Apr. 2013)

Annual Inflation Rate

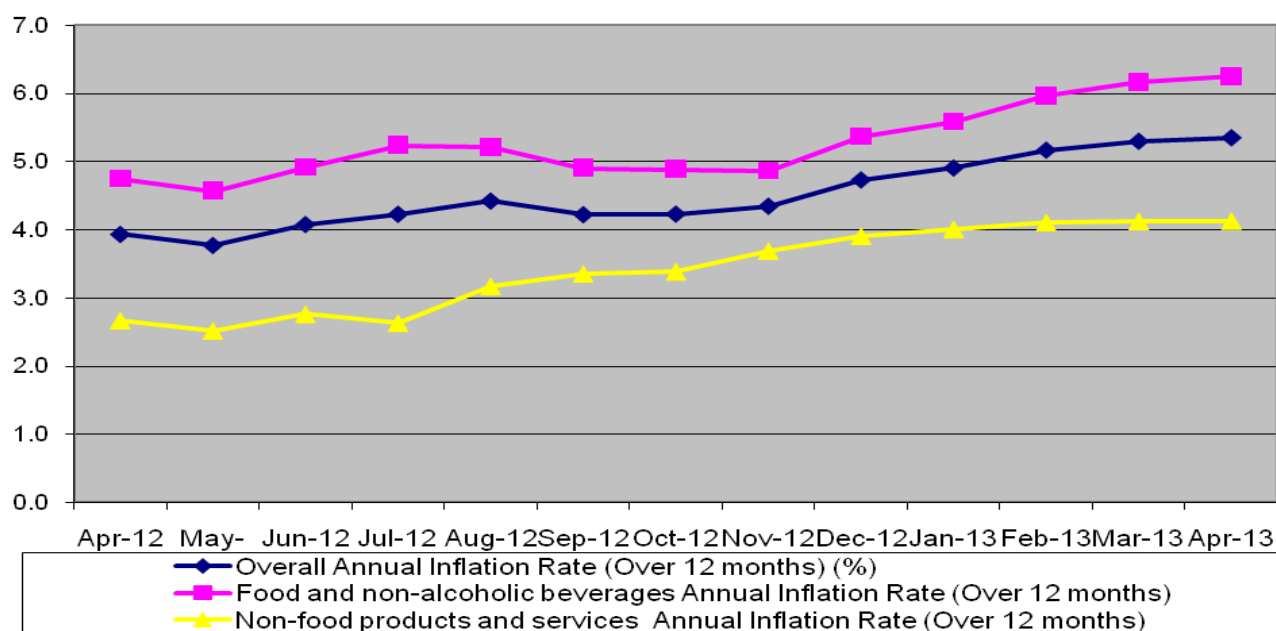
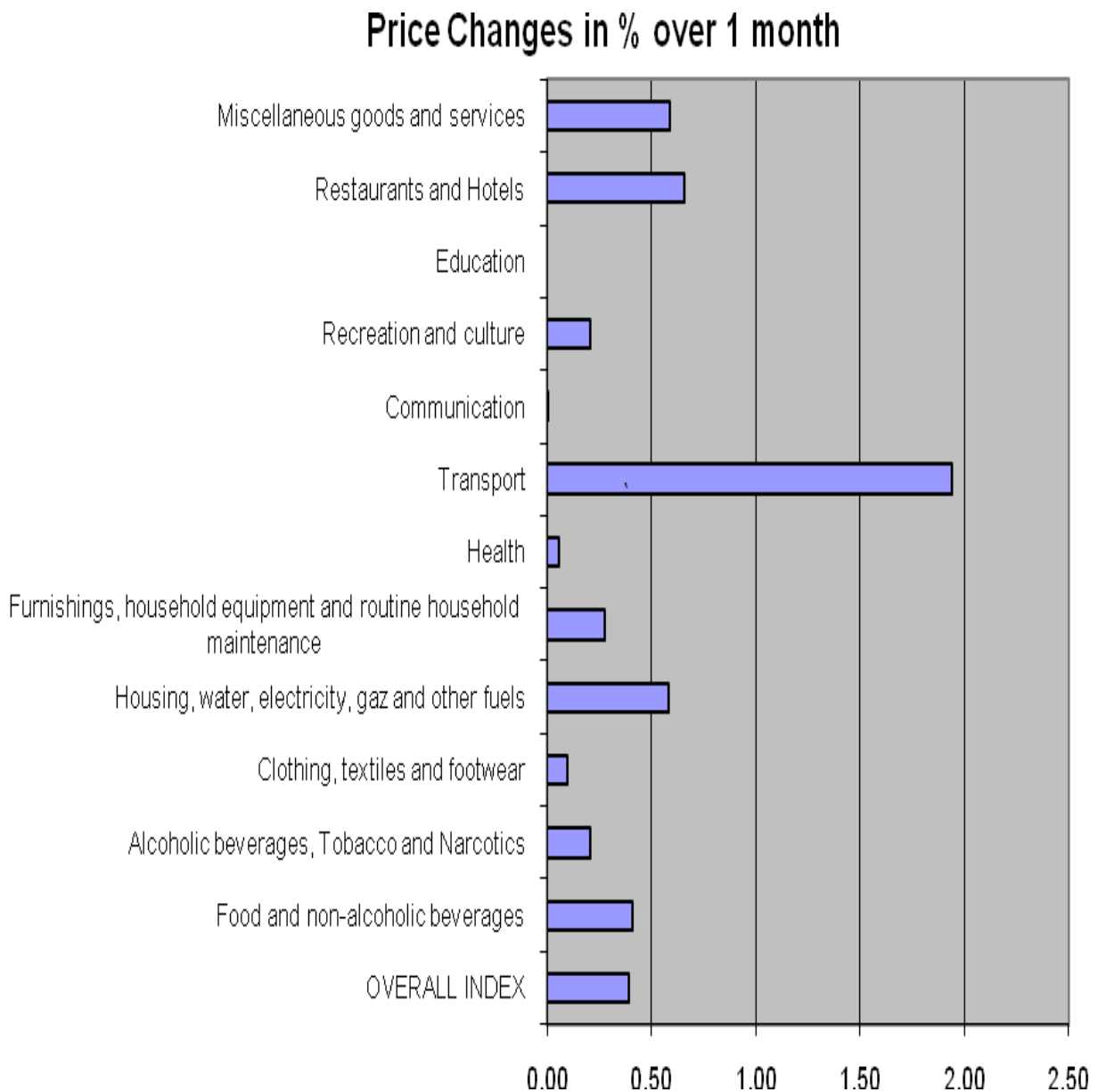


Figure 2.

Monthly changes – Comparison with the previous month: March 2013 to April 2013



#### CONTACTS

The Gambia Bureau of Statistics (GBOS)

Kanifing Institutional Layout

P.O.Box 3504 Serekunda

Tel. (220) 439 4529

Fax. (220) 437 7848

Web site: [www.qbos.gm](http://www.qbos.gm)

Publication Director: Mr. Nyakasi Sanyang, Statistician- General

Publication Editor: Mr Ousman Dibba, Director Prices and Government Finance Statistics GBOS

email: [ousman\\_dibba@yahoo.com](mailto:ousman_dibba@yahoo.com)

Statistician in charge of CPI: Fatou Darboe

email: [fdjabang@yahoo.com](mailto:fdjabang@yahoo.com)